

KEY

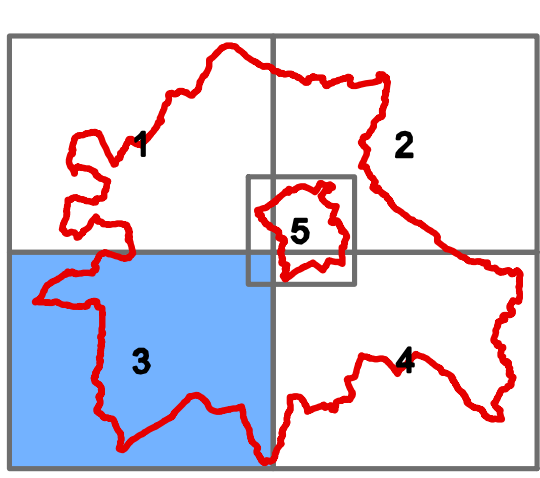
- South Cambridgeshire DC & Cambridge City Council Boundaries
- EA Main River
- Ordinary Watercourses
- Old West Internal Drainage Board
- Swaffam Internal Drainage Board
- Waterbeach Level Internal Drainage Board
- Beds and Ivel Internal Drainage Board
- Swavesey Internal Drainage Board
- Willingham and Over Internal Drainage Board


SCDC IDB areas

- Bedfordshire & River Ivel IDB
- Old West IDB
- Swaffam IDB
- Swavesey IDB
- Waterbeach IDB
- Willingham & Over IDB

Reproduced from Ordnance Survey data by permission of the Controller of Her Majesty's Stationary Office. © Crown copyright (2008). All rights reserved. License No. 0100022500. © 2008 NAVTEC

0 1 2 3 4 Kilometres SCALE: 1:90,000





WSP

TITLE:
**SOUTH CAMBRIDGESHIRE DC
 AND CAMBRIDGE CITY COUNCIL
 LEVEL 1 SFRA**

FIGURE No:
**EXISTING WATERCOURSES
 1402 - B - 1.3**